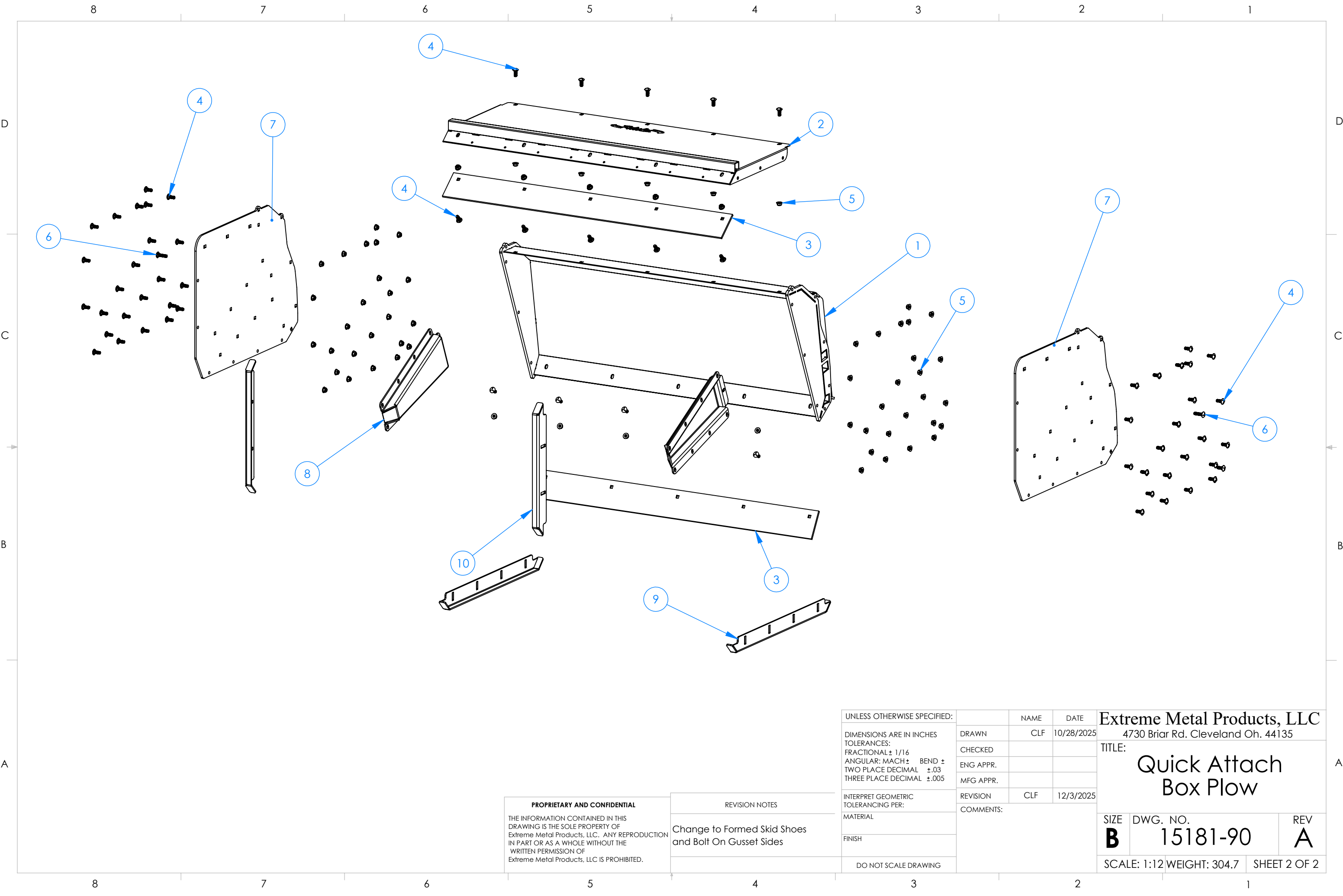


PROPRIETARY AND CONFIDENTIAL
THE INFORMATION CONTAINED IN THIS DRAWING IS THE SOLE PROPERTY OF Extreme Metal Products, LLC. ANY REPRODUCTION IN PART OR AS A WHOLE WITHOUT THE WRITTEN PERMISSION OF Extreme Metal Products, LLC IS PROHIBITED.

REVISION NOTES
Change to Formed Skid Shoes and Bolt On Gusset Sides

UNLESS OTHERWISE SPECIFIED:	NAME	DATE	Extreme Metal Products, LLC 4730 Briar Rd. Cleveland Oh. 44135		
DIMENSIONS ARE IN INCHES TOLERANCES: FRACTIONAL ± 1/16 ANGULAR: MACH ± BEND ± TWO PLACE DECIMAL ±.03 THREE PLACE DECIMAL ±.005	DRAWN	CLF	10/28/2025	TITLE: Quick Attach Box Plow	
	CHECKED				
	ENG APPR.				
	MFG APPR.				
INTERPRET GEOMETRIC TOLERANCING PER:	REVISION	CLF	12/3/2025	SIZE DWG. NO. REV B 15181-90 A	
MATERIAL	COMMENTS:				
FINISH					
DO NOT SCALE DRAWING					



PROPRIETARY AND CONFIDENTIAL
THE INFORMATION CONTAINED IN THIS
DRAWING IS THE SOLE PROPERTY OF
Extreme Metal Products, LLC. ANY REPRODUCTION
IN PART OR AS A WHOLE WITHOUT THE
WRITTEN PERMISSION OF
Extreme Metal Products, LLC IS PROHIBITED.

REVISION NOTES
Change to Formed Skid Shoes and Bolt On Gusset Sides

UNLESS OTHERWISE SPECIFIED:		NAME	DATE	Extreme Metal Products, LLC 4730 Briar Rd. Cleveland Oh. 44135		
DIMENSIONS ARE IN INCHES TOLERANCES: FRACTIONAL ± 1/16 ANGULAR: MACH ± BEND ± TWO PLACE DECIMAL ±.03 THREE PLACE DECIMAL ±.005		DRAWN	CLF	10/28/2025	TITLE: Quick Attach Box Plow	
		CHECKED				
		ENG APPR.				
		MFG APPR.				
INTERPRET GEOMETRIC TOLERANCING PER:		REVISION	CLF	12/3/2025	SIZE DWG. NO. REV B 15181-90 A	
MATERIAL		COMMENTS:				
FINISH						
DO NOT SCALE DRAWING		SCALE: 1:12 WEIGHT: 304.7 SHEET 2 OF 2				