

INSTALLATION INSTRUCTIONS

Honda Talon 1000 2-seater 2020

PART # 902111

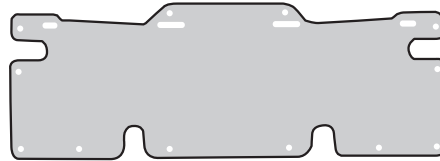
Kit Contents

Qty 1 1/4 - 20 screw
Qty 2 Fender Washers
Qty 1 Nyloc Nut
Qty 1 Hard Shield
Qty 1 Soft Shield
Qty 1 Split Sleeve
Qty 1 Rear Footwell Shield
Qty 5 Push Pins

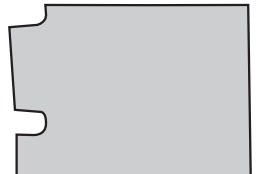
NOTES:



Hard shield



Soft shield



Rear footwell shield

SURFACE PREP:

Vacuum or wipe down installation area to remove all loose debris/dust. Then clean with isopropyl alcohol to remove any contaminants.

TOOLS:

Use manufacturer's suggested tools for panel removal.
Cleaner/Degreaser, Cloth, Scissors, 11mm socket & ratchet

1. Remove the hood by turning the two locks located on top of the hood and set hood a side.
2. Remove the factory rubber shield that is held in place with plastic push pins. Use a flat blade screw driver to lift the center pin up and removing the complete push pin. This will not be reused. See fig 1



Figure 1

3. In the kit, find the black split line sleeve. Using Scissors, cut this into two equal halves. Install these on the two coolant hoses at the bottom of the opening under the hood. These are for extra protection between the hoses and the new shield. See Fig 2

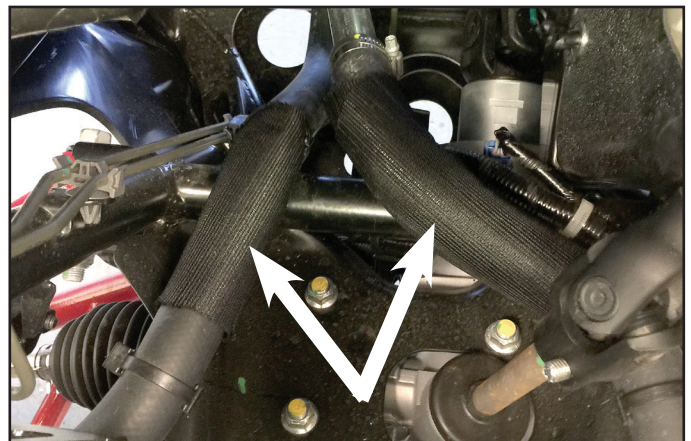


Figure 2

4. Find the push pin that is in the passenger side foot well that is in the center facing forward. Remove this pin. It will not be reused. Fig 3

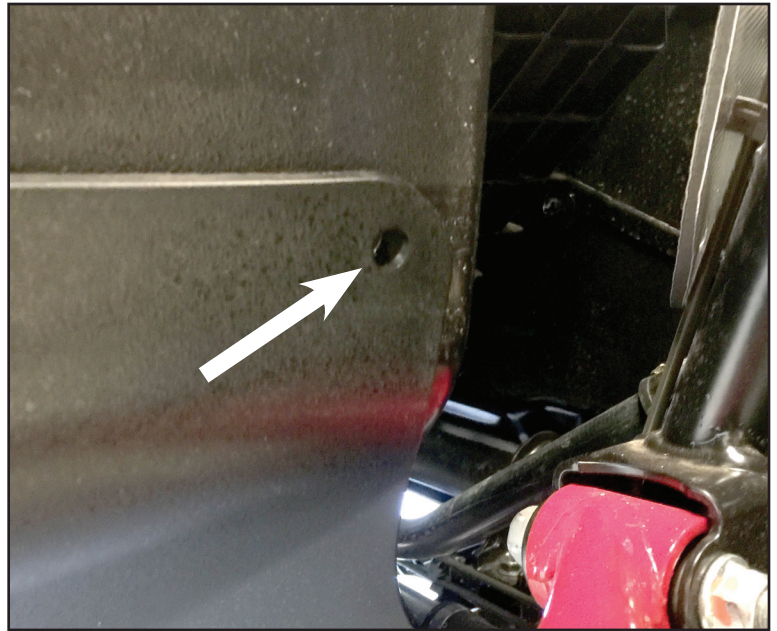


Figure 3

5. Install hard shield with holes on top and ear to the passenger side. When installing this shield, it is normal to have to slightly bend the shield to fit. The ear on the passenger side will fit between the two plastic factory shields where you removed the push pin in step 4. See fig 4 & 5

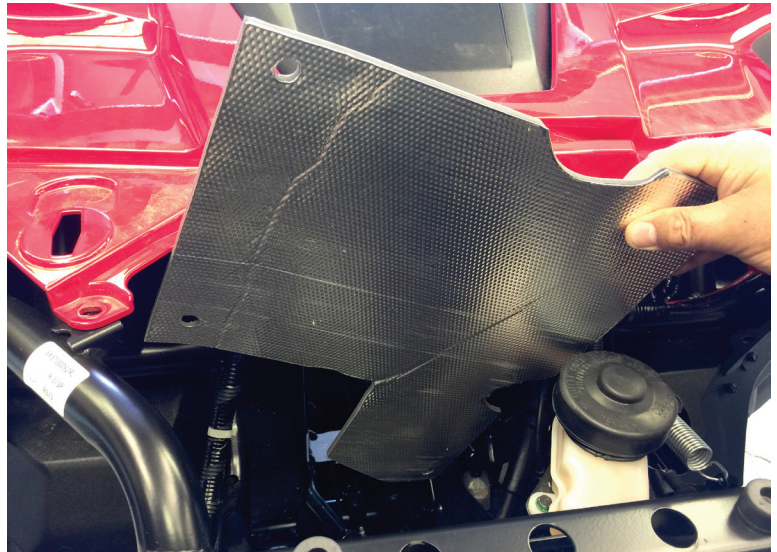


Figure 4

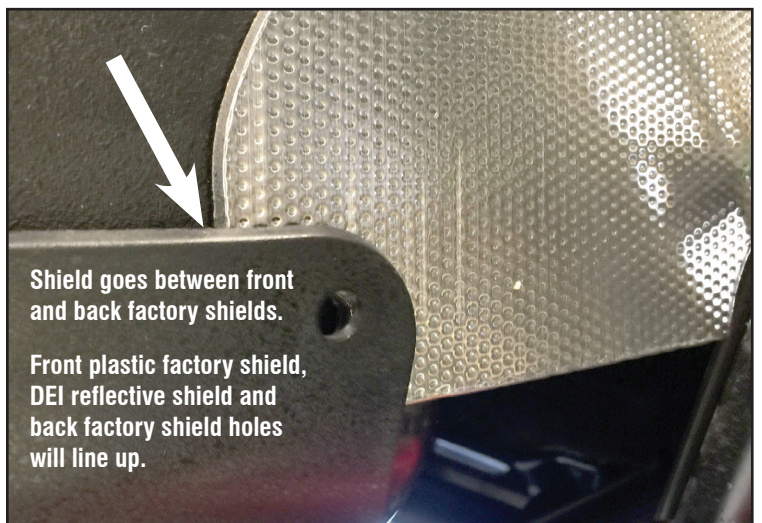


Figure 5

6. Push the top of the hard shield up to the frame and align with the holes. You will have to slightly bend the shield to align the holes.

7. Install the supplied bolt washers and nut through the factory hole in the passenger foot well sandwiching the DEI shield between the factory plastic parts. Tighten to snug only, do not over tighten. See fig 6

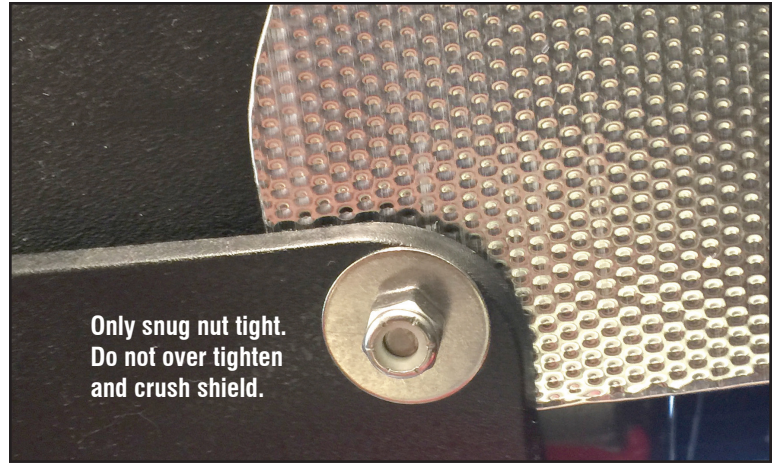


Figure 6

8. Take the soft glass fiber shield and install with the reflective side facing forward. Install with the new supplied push pins. See fig 7

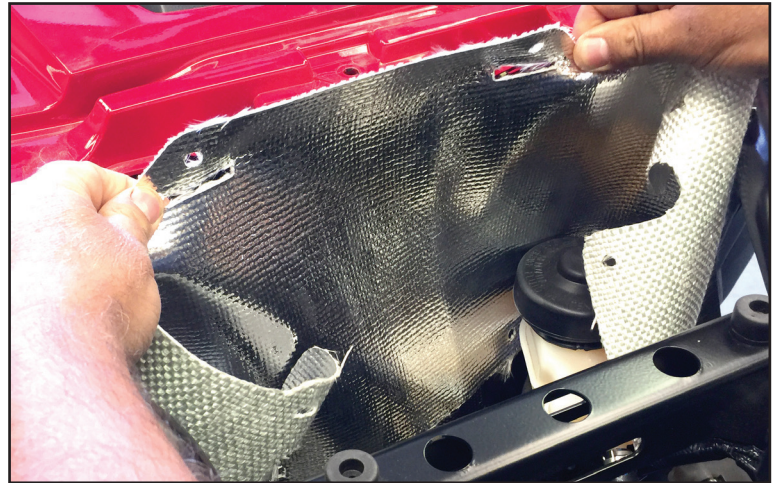


Figure 7

9. Use supplied push pins through the glass fiber shield and hard shield. Fig 8

9. Using the factory pins previously removed finish installing the glass fiber shield. For remaining holes use the DEI supplied push pins. Fig 9

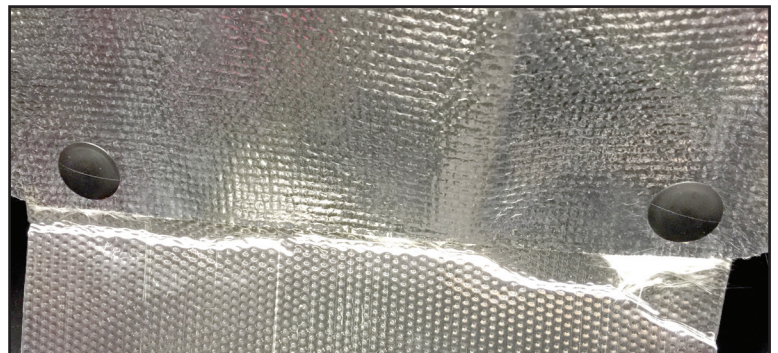


Figure 8

10. Reinstall the hood

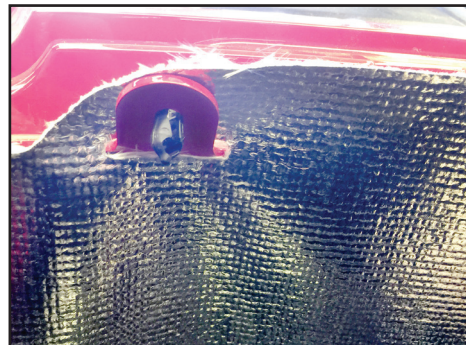


Figure 9

11. Find the flexible aluminum shield with insulation. This will be placed behind the passenger side between the engine. Fig 10

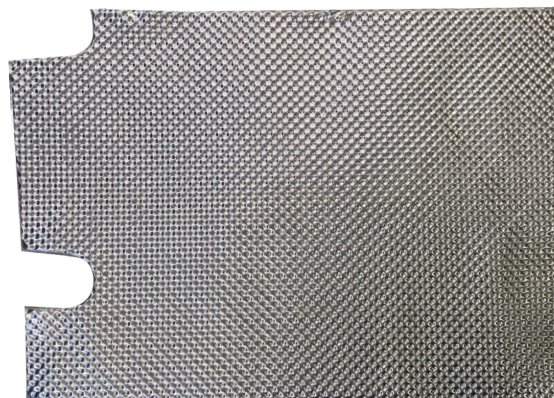


Figure 10

12. Clean the area shown in fig 11. This must be free of dirt, grease and debris. Use window cleaner or Denatured Alcohol.

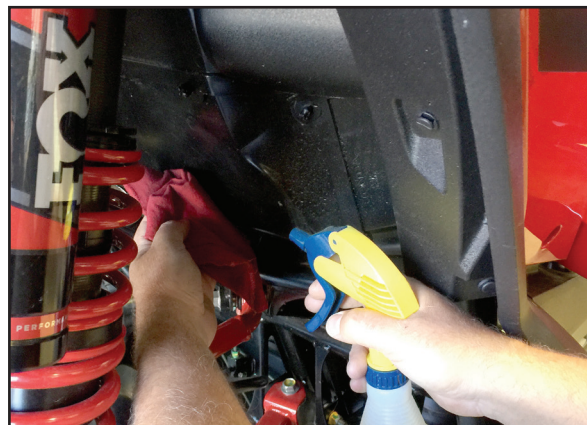


Figure 11

13. Pre-fit the shield contouring it to the panel. Fig 12

14. Peel a portion on the backing exposing the adhesive. Place the shield in place and push to secure. Then peel the balance of the backing and press the shield into place. Firmly push over the entire shield surface to ensure a good bond.

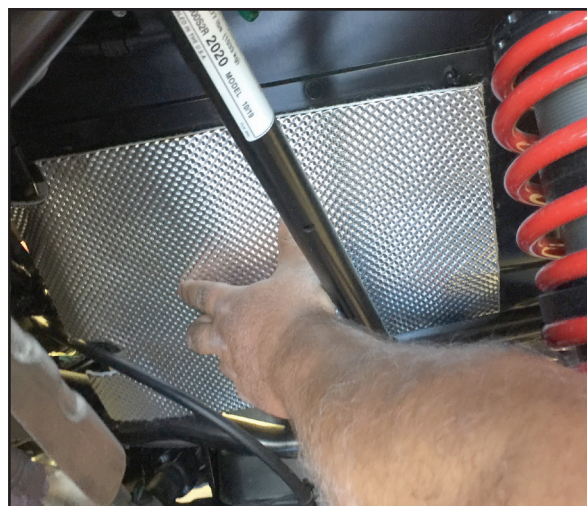


Figure 12