

Can-Am Pack Out Rack
Fits: X3, Trail and Sport including MAX Models.
P/N: 14542

Installation Instructions:

Includes:

1. Rack (14542)

Installation should be done by a certified technician.

Hardware Kit:

1. (4) 1/4-20 Nylon Flange Nut
2. (4) 1/4-20 x 2-1/4" Long Flange Bolts-Black (used on X3 only)
3. (4) 1/4" Flat Washers-Black
4. (4) 1/4-20 x 1" Stainless Carriage bolt (Sport and Trail Models only)
5. (4) Stn Stl Tabs (14561-03) (Sport and Trail models only)
6. (1) Logo Sticker

Note: This item is for all the Mavericks listed. You will not use all the hardware depending on your model.

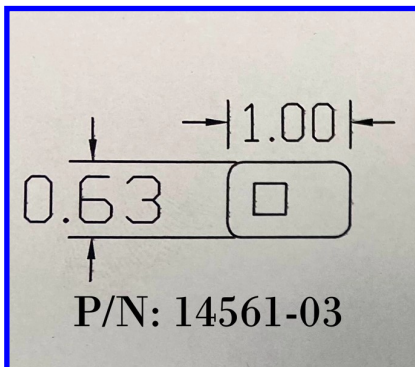
Installation:

Tools Needed:

1. T27 Torx Bit (X3 only)
2. 7/16" Socket Wrench
3. 3/8" Socket Wrench

Model: X3

1. Remove the (4) stock torx head bolts.
2. Set the rack in place.
3. Bolt the rack on using the 2-1/4" Bolts, nuts and washers provided.



Model: Sport and Trail

1. Slide the carriage bolts into the stainless steel tabs (14561-03).
2. Slide them into the cargo bed features and shown.
3. Set the rack in place.
4. Bolt the rack down using the nuts provided. Do not over tighten.

NOTE: When picking your Pack Out Boxes realize they do not have an identical mounting patterns. Some will be tighter than others. Strange right? That's what we thought so made it fit all boxes as well as we could.

