

EMP P/N - 13812

Polaris RZR XP1000 Flip Out Windshield

Fits: 2019-2021 RZR XP1000

Installation Instructions:

Includes:

Wrapped together in box (final packing).

1. (1) Top aluminum stiffener with studs-Black (13812-01)
2. (1) Center Poly (14352-03)
3. (1) Lower Poly (14352-02)
4. (1) 36" Long Black Piano Hinge (12377)
5. (1) 1/4" x 40" Long Bubble Edge Trim (6100B3x1/4A)

Skin Packed Parts (white board):

1. (2) 14352-05 Bracket for Lower Poly (RH & LH)
2. (1) 14304 Handle and Hardware Kit.
3. (2) Gas Struts (GGN20-020-D)
4. (1) Z-Bracket for top stiffener –Black (12810-04)
5. (2) 12810 Strap Clamp-Black Anodized.
6. (1) Hardware Kit (from below)

Hardware Kit (bag):

1. (2) 1-3/4" Rubber Coated Straps (COV2913Z1)
2. (18) 1/4-20 x 3/4" Truss Head Screw-Black.
3. (26) 1/4-20 Nyloc Flange Nuts.
4. (4) 1/4 x 1" Truss Head Screw-Black.
5. (2) 10 mm x 5/16"-16 Ball Studs.
6. (1) 1/8" x 1" x 35-1/2" Long Adhesive backed gasket.
7. (1) Logo Sticker

Tools Required:

1. Phillips Screw Driver
2. 7/16" Wrench
3. 15 mm Socket
4. Allen Wrench Set

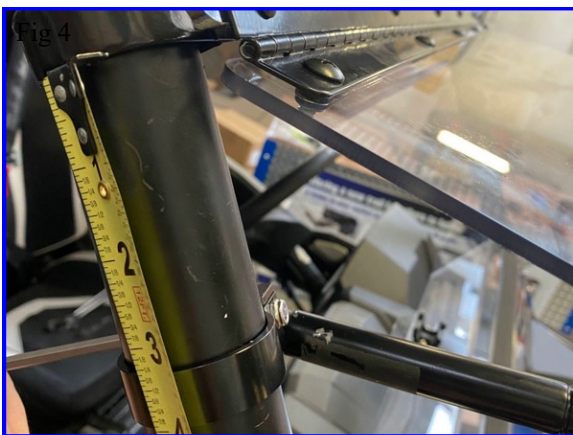
www.ExtremeMetalProducts.com

Installation should be performed by a certified technician.

NOTE: Once the protective film has been removed from this item, it can not be returned.

Installation:

1. Using a 15mm wrench remove the two cage bolts (do one side at a time) slide and install the lower poly brackets.
2. Peel back the protective film exposing the slots, edges and holes on all three pieces of poly.
3. Slide the 40" long bubble edge trim over the bottom of the lower poly part.
4. Using the 3/4" long screws and nyloc nuts attach the lower poly to the brackets you just installed. **DO NOT FULLY TIGHTEN YET.**
5. Attach the top aluminum stiffener to the cage using the (2) stock torx screws. Then attach the center to the stock plastic visor using (2) nylon nuts and the Z-bracket. See fig. 3 and 5.
6. Attach the top and center poly using the 36" long aluminum hinge. You will use the 3/4" long screws except for the two holes on ends of the top leaf. The two remaining rubber coated straps will go behind these two slots, therefore you will use the 1" long screws in these two holes. **DO NOT FULLY TIGHTEN YET.**
7. Attach the ends of the top leaf using the 1" screws, nyloc nuts and rubber coated straps. **DO NOT FULLY TIGHTEN YET.**
8. Slide the billet strap clamp with the ball stud over the tube about 3"-4" down from the hinge. **DO NOT FULLY TIGHTEN YET.**
9. Attach the ball stud bracket to the slots in the middle poly. The rectangle washer will go on the outside and the bracket on the inside. The hardware for this is in with the plastic handle. There is one per side.
10. Attach the gas springs to each ball stud. There is one gas spring per side.
11. Assemble the plastic handle and attach it to the center poly. See figures on page 5.
12. Adjust the opening action by moving the billet strap clamp up or down a little so that the windshield closes properly.
13. Peel the paper off the 1/8" x 1" wide adhesive backed foam strip and stick on the lower poly as shown.
14. Tighten all the hardware.
15. Your installation is complete.



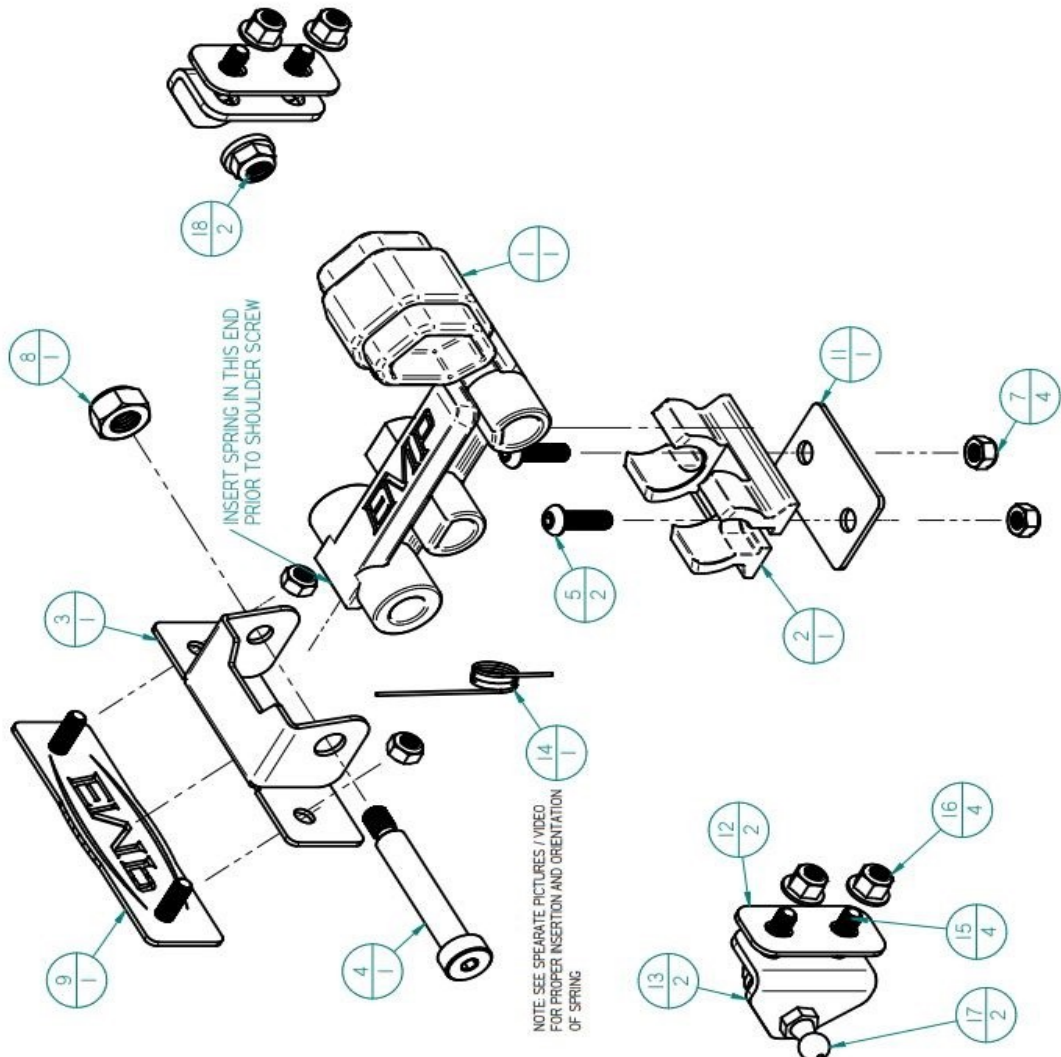




REVISION HISTORY

REV	DESCRIPTION	DATE	APPROVED

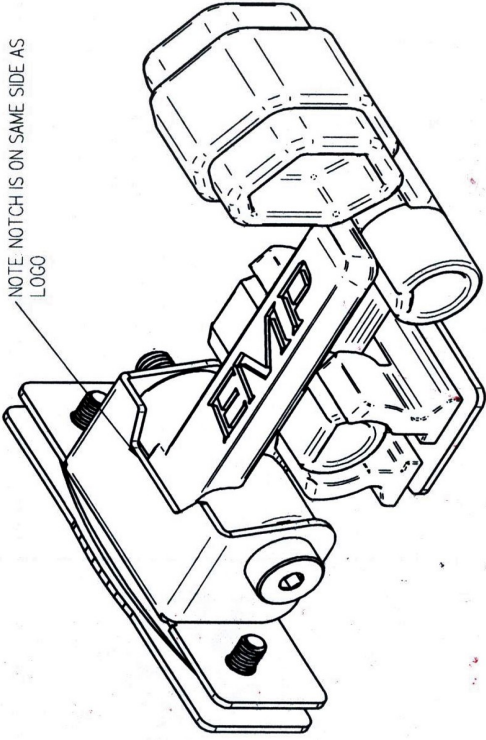
Item Number	File Name	Qty	Comments
1	14304-01	1	TEXTURE FINISH PER CH-V0033
2	14304-02	1	TEXTURE FINISH PER CH-V0033
3	14304-03	1	
4	92981A340-ALLOY STEEL SHOULDER SCREW	1	10MM SHOULDER, 55MM SHOULDER LENGTH, M6 X 125 THREAD
5	977531436-BLACK-OXIDE 18-8 SS BUTTON-HEAD CAP SCREW	2	18-8 STAINLESS STEEL BUTTON HEAD HEX DRIVE SCREW BLACK OXIDE, M6 X 100MM X 25MM LONG
7	936254250-18-8 STAINLESS STEEL NYLON-INSERT LOCKWUT	4	LOCKOUT, NYLON INSERT, STAINLESS, BLACK OXIDE, M6 X 100MM
8	936254350-18-8 STAINLESS STEEL NYLON-INSERT LOCKWUT	1	LOCKOUT, NYLON INSERT, STAINLESS, BLACK OXIDE, M6 X 125MM
9	14304-04	1	
10	935804725-PRESS-FIT STUDS	2	STAINLESS PEW STYLE INSERT, M6 THREAD, 18MM LONG PFG-M6-181
11	14304-05	1	
12	11215-05	2	
13	11215-15	2	
14	9271676-MUSIC-WIRE STEEL TORSION SPRING	1	TRM TO DRAWING SPECS
15	977531426-BLACK-OXIDE 18-8 SS BUTTON-HEAD CAP SCREW	4	18-8 STAINLESS STEEL BUTTON HEAD HEX DRIVE SCREW BLACK OXIDE, M6 X 100MM X 20MM LONG
16	94710403-18-8 SS NYLON-INSERT FLANGE LOCKOUT	4	SST Nylon Insert Flange Lockout, M6 x 1mm Black Oxide
17	Guden CAD Mobil BS101-02	2	.39" Dia Ball Stud Zinc Plated 5/16-18 Thread, .55" Length
18	94238A330-18-8 SS NYLON-INSERT FLANGE LOCKOUT	2	SST Nylon Insert Flange Lockout, Black Oxide, 5/16-18 Thread



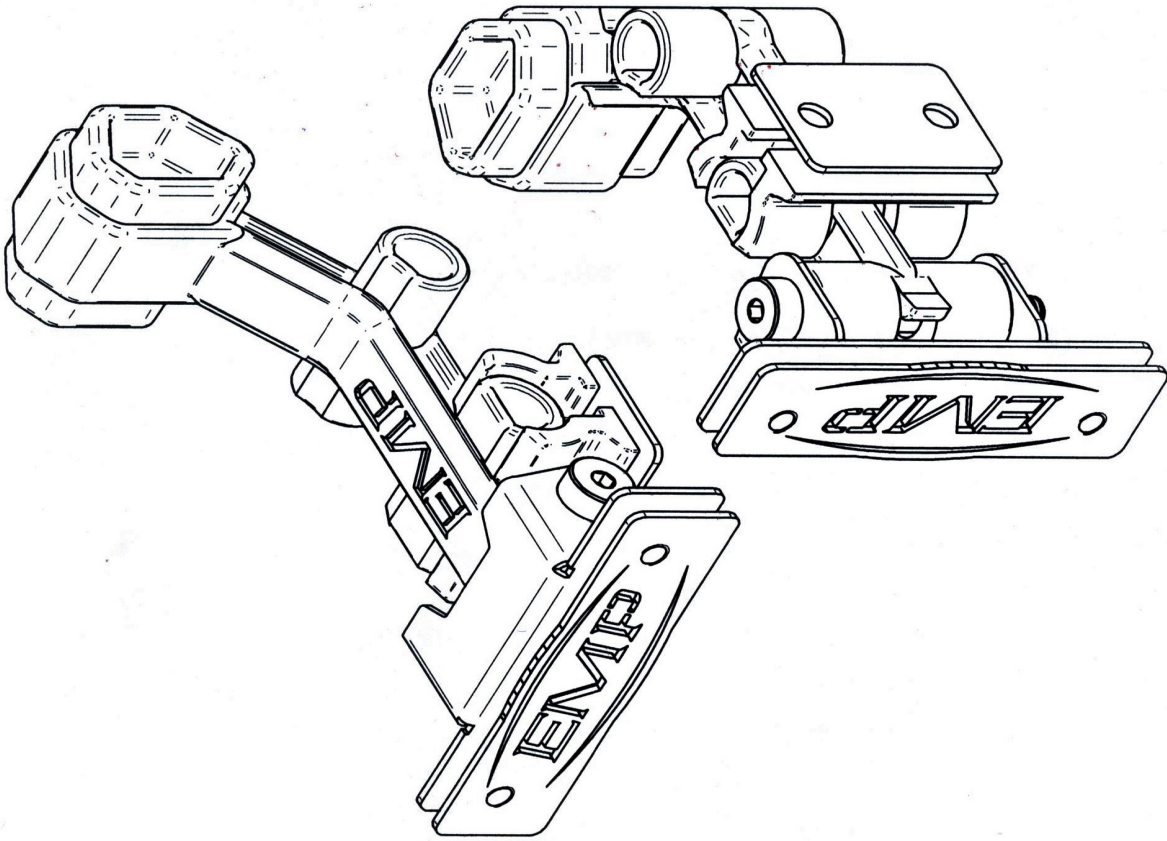
NAME	DATE	Extreme Metal Products, LLC
DRAWN	10/22/20	4730 Briar Rd, Cleveland, OH 44135
CHECKED		216-267-3900
ENG APPR		TITLE
MGR APPR		14304 POLY LATCH
UNLESS OTHERWISE SPECIFIED DIMENSIONS ARE IN INCHES ANGLES ±0.5°		SIZE DWG NO
2 PL #0.030 3 PL #0.015		B
SCALE:		FILE NAME: 14304_ASSEMBLT
WEIGHT:		REV
SHEET 2 OF 10		

REVISION HISTORY			
REV	DESCRIPTION	DATE	APPROVED

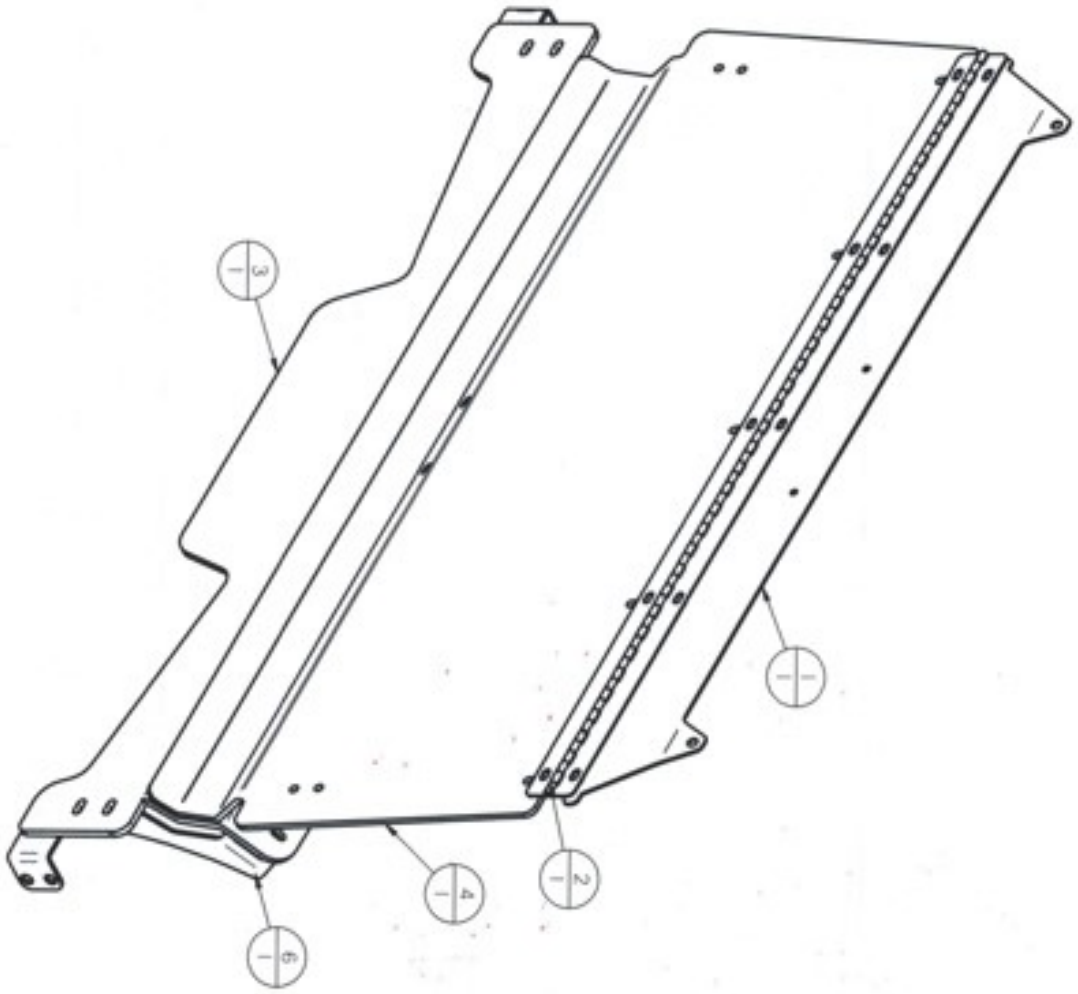
NOTE NOTCH IS ON SAME SIDE AS LOGO



NOTE SEE SEPARATE PICTURES / VIDEO FOR PROPER INSERTION AND ORIENTATION OF SPRING



NAME	DATE	Extreme Metal Products, LLC
DRAWN	10/22/20	4730 Briar Rd, Cleveland, OH 44135
CHECKED		216-267-3900
ENG APPR		TITLE
MGR APPR		14304 POLY LATCH
UNLESS OTHERWISE SPECIFIED		SIZE DWG NO
DIMENSIONS ARE IN INCHES		B
ANGLES ±0.5°		REV
2 P.L. ±0.030 3 P.L. ±0.015		FILE NAME 14304_ASSEMB.dft
SCALE	WEIGHT	SHEET 1 OF 10



REVISION HISTORY			
REV	DESCRIPTION	DATE	APPROVED

Item Number	File Name	Quantity
1	13812-01	1
2	12377-06	1
3	14352-02	1
4	13812-03	1
5	14304_ASSEM	1
6	14352-05	1
7	14352-05.mir	1

NAME	DATE	TITLE	SCALE	WEIGHT	SHEET 1 OF 6
GRANN SMC	05/10/21	Extreme Motor Products, LLC 4730 Brier Rd, Cleveland OH 44135 216-267-3900	2 PL 1X00X 3 PL 1X00X		
CHECKED					
ENG APPR					
MGR APPR					

UNLESS OTHERWISE SPECIFIED
DIMENSIONS ARE IN INCHES
ANGLES 4X4"

FILE NAME: 13812_ASSEM.dft

SCALE: WEIGHT: SHEET 1 OF 6