

EMP P/N - 11089

Cooter Brown Universal UTV Top

Fits: Rhino, Ranger, Teryx, Mule 3010/4010, Case, and others.

Includes:

1. (1) Telescoping Universal Top.
2. (6) 1-3/4" Wide Rubber Coated Straps.
3. (6) 2" Rubber Coated Straps.
4. (7) 1/4-20 x 1" Black Truss Head Screw - Phillips.
5. (13) 1/4" Nyloc Flange Nuts-Black
6. (4) Plastic Rivets
7. (13) 1/4" x 1-1/4" O.D. Black Washers.
8. (6) 1/4-20 x 1-1/4" Black Truss Head Screw.
9. (2) 1/4-20 x 2-1/4" Black Flange Bolts (Ranger Only).
10. (2) 1-1/8" Long Spacers (Polaris Ranger Only).
11. (2) P/N 9881 1-3/4" Quick Clamp (Polaris Ranger Only).
12. (1) Double sided tape 3 ft. (3M 5962) (stuck to one side of the top)
13. (1) EMP® Logo Decal

Tools required:

1. Clamp
2. 3/8" Socket Wrench
3. 7/16" Socket Wrench
4. Electric Drill with a 1/4" Drill Bit.
5. 10 mm Socket (Rangers Only)

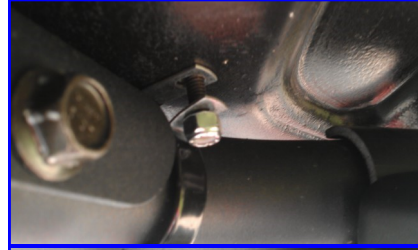
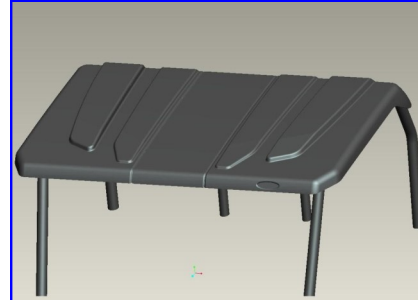
Important: This is a universal top. There are no returns once you drill any holes or apply tape to this top. No Exceptions, so please take your time.

Instructions:

1. Telescope the top into the correct width depending on your vehicle. Mark the correct location.
2. Using the double sided tape and primer tape the two halves together. NOTE: follow the directions in the tape box and once you tape it you will not be able to take it apart. It will take up to 72 hours to harden.
3. You may not need to bolt the two halves together, depending on your application and preference.
4. Drill holes into the inner side using the outer side for a template.
5. Remove clamps and run gasket between the two halves. Put it in the best location for your application.
6. Bolt the two pieces together using the 1" bolts, nuts, and washers.
7. Locate the best position (front to rear) depending on your application and other accessories such as windshields.
8. Use the best size rubber coated straps for you application. Some units (such as the MULE) will require both sizes.
9. Using at least three straps on the front and at least two on the rear. Put the strap around the cage and use the strap holes for drill guides. Take your time and do it right.
10. Using the 1-1/4" bolts, nuts, fender washers, and flat washers. Attach your top to your cage. The large washers go on top and the smaller washer on the bottom.
11. Your installation is complete.

Ranger Owners:

You will use the spacers and quick clamps for the rear bar. The rear bar on the Ranger is lower than the other bars. The spacers will make the cage mounting points all the same height. See the picture to the right.



www.ExtremeMetalProducts.com

Additional notes on taping the two pieces together.

1. You may not want to use the bolts, just the tape. Your preference and you can always add bolts later.
2. Once you tape it you will not be able to pull it apart. So be sure you have read the directions in the tape box.
3. The tape will stick right away but will take up to 72 hours to fully harden.