

## EMP # 11958 Ranger XP900 Rear Bumper

**Fits: 2013-16 Ranger XP900 & XP900 Crew,  
2015-16 Ranger 570 Full Size & 570 Full Size Crew**

### Includes:

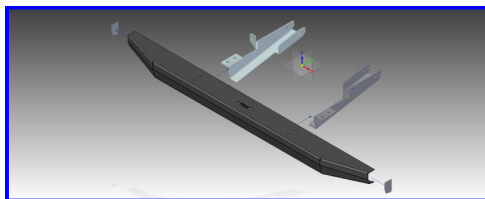
1. (1) Rear Bumper
2. (2) Mounting Brackets (RH & LH)
3. (4) 5/16-18 x 3-1/2" Bolts
4. (2) 5/16-18 x 1" Flange Bolts
5. (4) 3/8-16 x 1" Black Carriage Bolts
6. (10) 5/16 Washers
7. (4) 3/8 Washers
8. (7) 5/16" Nylon Nuts
9. (5) 3/8" Nylon Nuts
10. (1) Logo Sticker

### Installation:

Note: Do not tighten anything until last.

Installation should only be done by a professional mechanic.

1. Bolt the brackets to the bed using the 3-1/2" bolts, nuts, and washers (see pic.). The rear bracket flanges (with holes) will point towards the outside. Once, these are in place bolt the rear of the bracket to the bend using the 1" Flange bolts, washers, and nuts. Since, these are flange bolts you will only be using the washers on the nut side.
2. Bolt the bumper to the brackets using the Black Carriage Bolts, Nuts, and Washers.
3. Tighten all the bolts.



Revision 12-9-2015

