

Universal Bucket Grapple

Fits: Up to 72" Wide Loader Buckets

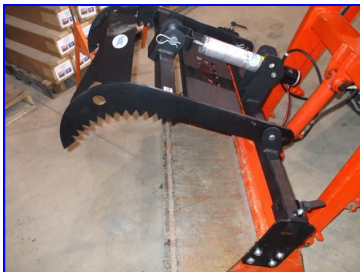
P/N 10246

Installation Instructions

Note: Videos are on our Website

Includes:

1. (1) Grapple Assembly
2. (1) 72" 2x2 Cross Mount Tube (Trim to Fit Bucket)
3. (2) Mounting Brackets with nuts welded on them.
4. (1) Bracket for Switch Box (L-shaped Bracket, p/n 10246-13) with small Bolt, Washer and Nut
5. (1) Wiring Harness with Squeeze Type Splice Connector (for Relay Lead Wire)
6. (1) Hybrid Hydraulic Actuator (KYB)
7. (2) 1/2-13 Fabricated "Wing" Bolts
10. (2) Clevis Pin 5/8" Diameter x 1-1/2" Long (p/n 97245A451)
11. (2) Small Cotter Pin (p/n 98335A069) for Clevis Pins (above)
12. (8) 3/8-16 x 1" Hex Head Bolt
13. (16) 3/8 Washers
14. (8) 3/8 Nyloc Nut
15. (2) 5/8 x 3-1/2" Hex Head Bolts (to Mount Actuator)
16. (2) 5/8 Nuts
17. (4) 5/8 Washers
18. (2) Square Plastic End Caps (for Ends of 2" Square Tube)



Note: Pictures shown may display components that are not current; but, you get the idea.



Note: You may want to watch the videos on features and installation overview. Links to the videos are available on our website.

Installation:

Wire Harness:

- 1. You will need to determine the best way to route the wires and attach the Switch / Box for your tractor. The Switch can be removed from the box and mounted in a spare knockout in your instrument panel or the box can be mounted with the “L” Bracket in a location you choose.**
- 2. Attach the black wire to the Negative terminal on your battery.**
- 3. Attach the red wire with the auto reset fuse and relay to the positive terminal on your battery.**
- 4. Attach the blue colored lead wire from the relay to a keyed on power source at the back of your ignition switch or, using the Squeeze Type Splice Connector, attach the blue wire to an existing wire that has power only when the key is turned on. This important safety mechanism prevents the grapple from moving with the switch unless the ignition key is switched on.**
- 5. The plug at the end of the harness will be inserted into the plug coming from the Actuator pig tail.**

Note: once everything is assembled, verify the actuator works only when the ignition key is turned on. If not, you will need to find another wire to connect the blue lead wire until you verify keyed on power only.

Grapple:

- 1. Using C-Clamps attach the mounting brackets to the Bucket. Do not drill holes until you test the action of the grapple for alignment.**
- 2. Assemble the grapple assembly to the 2 x 2 tube using the 5/8” clevis pins and cotter pins.**
- 3. Attach the actuator to the assembly. The Rod end will go towards the front. Use the 5/8” x 3-1/2” Bolts, Washers and Nuts to mount the Cylinder / Actuator to the Grapple and Cross Tube Bracket.**
- 4. Connect the harness to the Actuator / Cylinder and cycle the grapple to a closed position (rod moves out). Adjust the entire assembly (loosen and move side brackets around) until the Grapple is positioned where you want it in the closed position. Make sure there is no interference between the grapple and any other hardware on your tractor when it is cycled fully open and closed.**
- 5. Once your are satisfied, you can drill the holes for the 3/8” bolts to mount the side brackets (we suggest you start by pre-drilling using a small diameter drill bit and work up to the size hole you desire for the bolts. Mount the brackets with the bolts, washers and nuts provided.**
- 6. Reassemble if necessary; retest opening and closing action checking again for clearance. Adjust, re-drill and re-mount as necessary.**
- 7. Now it’s time to get to work!**

Warning:
Serious injury or death could result if the following is not considered while operating your Grapple.

- Always stay clear of the grapple while operating. Make sure any person or pet is clear when operating the grapple.
- Not to be operated by anyone under the age of 18.
- Always lower grapple against the bucket when not in use. We suggest unplugging and / or removing the grapple when not in use.
- Power should be turned off when the tractor is turned off.
- Keep hands and feet clear of the grapple when in use.
- Check the lifting capacity of your loader and tractor. Never exceed the manufacturers lifting capacities.
- Follow all instructions that came with your tractor.

This grapple is designed for occasional use on Compact / Sub-Compact tractors. Use on tractors, skid steers or other equipment with horsepower rated greater the 37 or loader with greater than 800 lb lift capacity is not recommended and voids any and all warranties.

Extreme Metal Products, LLC
WWW.EXTREMEMETALPRODUCTS.COM
1-216-267-5335