

2010 Ranger 400 Winch Mount  
Fits: Most winches up to 3500 lbs.  
Mounts inside front bumper.

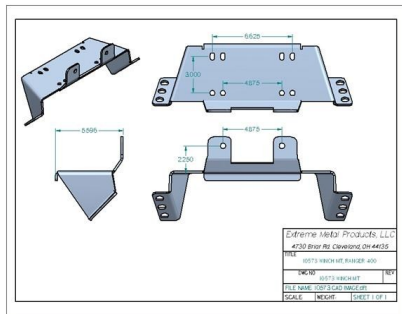
**P/N EMP-10573**

**Includes:**

1. (1) Winch Mount
2. (4) 3/8-16 x 1" Flange Bolt
3. (4) 3/8 Flat Washers
4. (4) 3/8 nylon Nuts
5. (1) Logo Sticker

**Installation:**

1. Install your winch and fairlead to the mounting bracket.
2. Remove your front bumper.
3. Using hardware provided bolt the mount inside the bumper.



2010 Ranger 400 Winch Mount  
Fits: Most winches up to 3500 lbs.  
Mounts inside front bumper.

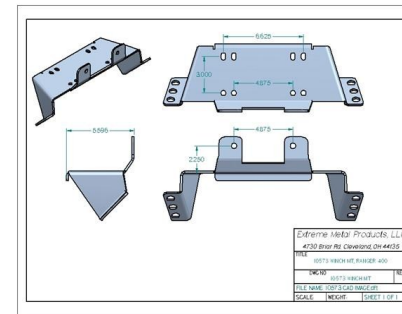
**P/N EMP-10573**

**Includes:**

1. (1) Winch Mount
2. (4) 3/8-16 x 1" Flange Bolt
3. (4) 3/8 Flat Washers
4. (4) 3/8 nylon Nuts
5. (1) Logo Sticker

**Installation:**

1. Install your winch and fairlead to the mounting bracket.
2. Remove your front bumper.
3. Using hardware provided bolt the mount inside the bumper.



2010 Ranger 400 Winch Mount  
Fits: Most winches up to 3500 lbs.  
Mounts inside front bumper.

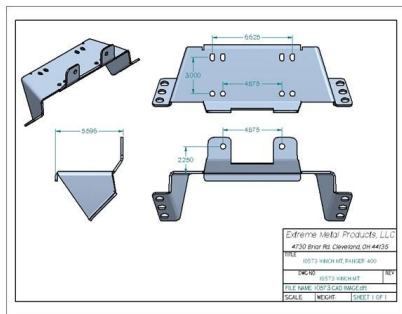
**P/N EMP-10573**

**Includes:**

1. (1) Winch Mount
2. (4) 3/8-16 x 1" Flange Bolt
3. (4) 3/8 Flat Washers
4. (4) 3/8 nylon Nuts
5. (1) Logo Sticker

**Installation:**

1. Install your winch and fairlead to the mounting bracket.
2. Remove your front bumper.
3. Using hardware provided bolt the mount inside the bumper.



2010 Ranger 400 Winch Mount  
Fits: Most winches up to 3500 lbs.  
Mounts inside front bumper.

**P/N EMP-10573**

**Includes:**

1. (1) Winch Mount
2. (4) 3/8-16 x 1" Flange Bolt
3. (4) 3/8 Flat Washers
4. (4) 3/8 nylon Nuts
5. (1) Logo Sticker

**Installation:**

1. Install your winch and fairlead to the mounting bracket.
2. Remove your front bumper.
3. Using hardware provided bolt the mount inside the bumper.

