

Artic Cat Wild Cat Brush Guard with winch mount
P/N: EMP-11711
Fits: 2012 Wild Cat

Watch this Youtube Video before installing this Brush Guard. The two minute video will save you a lot of time.

<http://www.youtube.com/watch?v=Ict-aqMpIU4> or it can be seen on our website also.

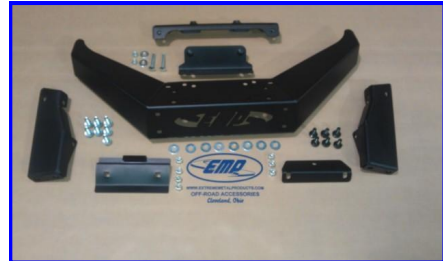
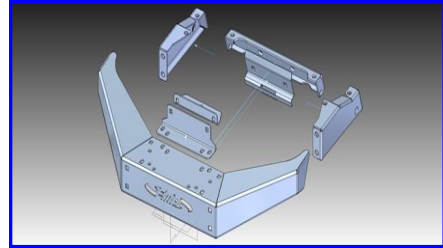
This should only be installed by a professional.

Tool Required:

1. 1/2" Open End Wrench
2. 9/16" Open End Wrench
3. 1/2" Socket
4. 9/16" Socket
5. Ratchet for sockets.
6. 3/8" diameter drill bit and drill (clearance hole for a 5/16" socket).
7. Torx bit for removing plastic cowling.

Includes:

1. (1) Brush Guard
2. (1) Rear Channel
3. (1) Rear Channel front brace
4. (2) Side Brackets (LH and RH)
5. (1) Small L-Shaped Frame Support
6. (1) Large L-Shaped Connecting Bracket
7. (8) 3/8" x 1" Black Carriage Bolts
8. (2) 5/16-18 x 2" Carriage Bolts
9. (2) 3/8-16 x 1-3/4" Hex Bolts
10. (5) 3/8-16 x 1" Flange Head Bolts
11. (14) 3/8" Flat Washers
12. (2) 5/16" SAE Flat Washers
13. (11) 3/8-16 Nylon Nuts
14. (2) 5/16-18 Nylon Nuts
15. 5/16-18 x 1" Coupling Nut (90268A030)



Installation:

1. Watch the video.
2. Put vehicle in park.
3. Remove the plastic front cowling. You will have to remove the torx screws.
4. Remove the four bolts that hold the steering box in place. You will need clearance for the next step and this will help.
5. Slide the channel in behind the frame. This is very tricky but will go in (see the video if you have problems).
6. Bolt the steering box back in place and tighten.
7. Using the 3/8-16 x 1-3/4" bolts, washer and channel front brace bolt the channel in place. You will be sandwiching these around the frame. You can tighten these bolts now.
8. Bolt the side braces to the rear channel with the 3/8 x 1" Flange bolts. Do not tighten yet.
9. Attach the small L-Shaped bracket behind the frame with a 3/8 bolt.
10. Drill out the frame in front of the small L-Shaped bracket. These will be clearance holes for the 5/16" x 2" Carriage bolts.
11. Drill out plastic cowling for the bolts.
12. Bolt plastic cowling back to the front with the stock Torx bolts.
13. The coupling nuts will be spacers between the plastic and the large L-Shaped bracket.
14. Attach the large L-Shaped bracket with the 5/16" carriage bolts, coupling nuts, 5/16" Nylon Nuts, and washers (DO NOT Tighten Yet). NOTE: the bottom small leg of the bracket will be attached with your winch bolts if you use a winch. If you do not use a winch attach it to the bumper with the 3/8" black carriage bolts.
15. Bolt the bumper to the side brackets with the 3/8" Carriage Bolts, 3/8" Nylon Nuts, and Washers.
16. Tighten all the bolts.
17. Bolt your UTV winch to the top of the brush guard.



WWW.EXTREMOMETALPRODUCTS.COM
OFF-ROAD ACCESSORIES
Cleveland, Ohio